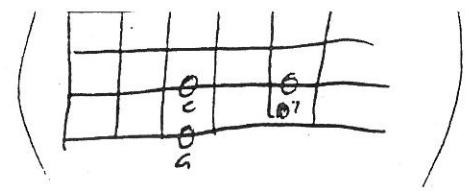
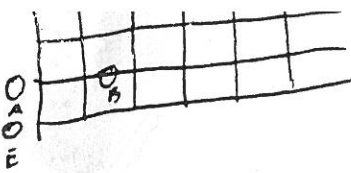


# Sloop John B



E (G)

1. We come on the Sloop John B my grand - fa - ther and me  
 2. The first mate he got drunk broke up the peo - ple's trunk  
 3. The poor cook he got the fits threw a - way all of our grits

B7 (D7)

'round Nas - sau town we did roam drink - in' all  
 Constable come a - board and take him a - way Mis - ter John  
 then he went and he ate up all of our corn Let me go

E (G) A (C) E (G)

night got in - to a fight I feel so broke - up  
 Stone please let me a - lone I feel so broke - up  
 home I wan - na go home This is the worst trip

B7 (D7) E (G)

I wan - na go home So hoist up the John B sail  
 I wan - na go home  
 since I was born

20 see how the main sail sets send for the cap - tain a shore let me go

B7 (D7) E (G) A (C)

24 home let me go home I wan - na go home I


E (G) B7 (D7) E (G)

30 feel so break - up I wan - na go home

# Bass I Song Patterns

## Louie Louie

G C D C G C D C




1 1 3 1 1 1 3 1

Detailed description: This block contains the bass line for 'Louie Louie'. It is written in 4/4 time with a key signature of one sharp (F#). The notation consists of a single staff with a treble clef. Above the staff, the chords G, C, D, C, G, C, D, and C are indicated. The music features a repeating eighth-note pattern. Below the staff, a tablature line shows the fret numbers: 3 3 3 7 7 3 3 7 for the first measure, 5 5 5 7 7 3 3 7 for the second, 3 3 3 7 7 3 3 7 for the third, and 5 5 5 7 7 3 3 7 for the fourth. Below the tablature, the fingerings 1, 1, 3, 1, 1, 1, 3, and 1 are listed for each measure.

## Werewolves Of London

5 D C G D C G




3 1 1 3 1 1

Detailed description: This block contains the bass line for 'Werewolves Of London'. It is written in 4/4 time with a key signature of one sharp (F#). The notation consists of a single staff with a treble clef. Above the staff, the chords D, C, G, D, C, and G are indicated. The music features a repeating eighth-note pattern. Below the staff, a tablature line shows the fret numbers: 5 5 7 5 3 3 7 3 for the first measure, 3 3 7 3 3 3 7 3 for the second, 5 5 7 5 3 3 7 3 for the third, and 3 3 7 3 3 3 7 3 for the fourth. Below the tablature, the fingerings 3, 1, 1, 3, 1, and 1 are listed for each measure.

## Hang On Sloopy

### Main Pattern

9 G C D C D Climax

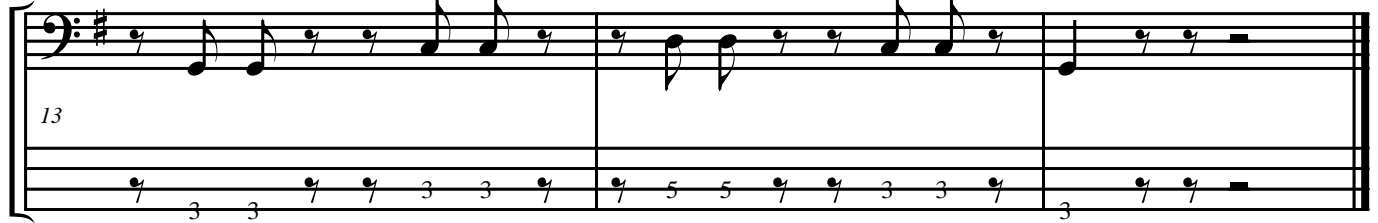


1 1 3 1 3 3

Detailed description: This block contains the main pattern for 'Hang On Sloopy'. It is written in 4/4 time with a key signature of one sharp (F#). The notation consists of a single staff with a treble clef. Above the staff, the chords G, C, D, C, and D are indicated, followed by 'Climax'. The music features a repeating eighth-note pattern. Below the staff, a tablature line shows the fret numbers: 3 3 3 3 5 5 3 5 for the first measure, 5 5 5 5 5 5 5 5 for the second, and 5 5 5 5 5 5 5 5 for the third. Below the tablature, the fingerings 1, 1, 3, 1, 3, and 3 are listed for each measure.

### Ending

13 G C D C G



1 1 3 1 1

Detailed description: This block contains the ending for 'Hang On Sloopy'. It is written in 4/4 time with a key signature of one sharp (F#). The notation consists of a single staff with a treble clef. Above the staff, the chords G, C, D, C, and G are indicated. The music features a repeating eighth-note pattern. Below the staff, a tablature line shows the fret numbers: 7 3 3 7 7 3 3 7 for the first measure, 7 5 5 7 7 3 3 7 for the second, and 3 7 7 for the third. Below the tablature, the fingerings 1, 1, 3, 1, and 1 are listed for each measure.

# More Bass I Song Patterns

## Time Has Come Today

Pattern 1 (Intro) D

Musical notation for Pattern 1 (Intro) in D major, 4/4 time. The pattern consists of four measures, each with a whole note chord and a corresponding bass line. The chords are D, C, G, and D. The bass lines are: D (3), C (1), G (1), and D (3). The notation includes a treble clef, a key signature of two sharps (F# and C#), and a 4/4 time signature. The bass line is written on a bass staff with a double bar line at the end.

Pattern 2

Musical notation for Pattern 2 in D major, 4/4 time. The pattern consists of four measures, each with a whole note chord and a corresponding bass line. The chords are D, C, G, and D. The bass lines are: D (5), C (3), G (3), and D (3). The notation includes a treble clef, a key signature of two sharps (F# and C#), and a 4/4 time signature. The bass line is written on a bass staff with a double bar line at the end.

Pattern 3 (only one time)

Musical notation for Pattern 3 in D major, 4/4 time. The pattern consists of three measures, each with a whole note chord and a corresponding bass line. The chords are D, C, and A. The bass lines are: D (5), C (3), and A (5). The notation includes a treble clef, a key signature of two sharps (F# and C#), and a 4/4 time signature. The bass line is written on a bass staff with a double bar line at the end.

## Gloria

13

Musical notation for Gloria in D major, 4/4 time. The pattern consists of four measures, each with a whole note chord and a corresponding bass line. The chords are E, D, A, and E. The bass lines are: E (7), D (7), A (5), and E (7). The notation includes a treble clef, a key signature of two sharps (F# and C#), and a 4/4 time signature. The bass line is written on a bass staff with a double bar line at the end.

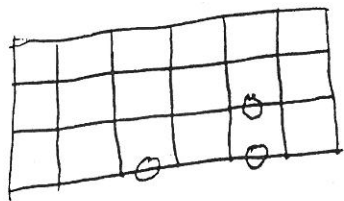
# Mr. Tambourine Man

Bob Dylan

Refrain:

<sup>G</sup> <sup>A7</sup> <sup>D</sup> <sup>G</sup>  
Hey Mr. Tambourine man play a song for me  
<sup>D</sup> <sup>(G Em)</sup> <sup>A7</sup> <sup>A7</sup>  
I'm not sleepy and there ain't no place I'm going to  
<sup>G</sup> <sup>A7</sup> <sup>D</sup> <sup>G</sup>  
Hey Mr. Tambourine man play a song for me  
<sup>D</sup> <sup>(G Em)</sup> <sup>A7</sup> <sup>D</sup> <sup>D</sup> <sup>D</sup> <sup>D</sup>  
In the jingle jangle morning I'll come following you.

- <sup>G</sup> <sup>A7</sup> <sup>D</sup> <sup>G</sup>  
1. Though I know that evening's empire has returned into sand  
<sup>D</sup> <sup>G</sup> <sup>D</sup> <sup>(G Em)</sup> <sup>A7</sup> <sup>A7</sup>  
Vanished from my hand, left me blindly here to stand but still not sleepin'  
<sup>G</sup> <sup>A7</sup> <sup>D</sup> <sup>G</sup> <sup>D</sup> <sup>G</sup>  
My weariness amazes me I'm branded on my feet, I have no one to meet  
<sup>D</sup> <sup>(G Em)</sup> <sup>A7</sup> <sup>A7</sup>  
And the ancient empty street's too dead for dreaming.
- <sup>G</sup> <sup>A7</sup> <sup>D</sup> <sup>G</sup>  
2. Take me on a trip upon your magic swirling ship  
My senses have been stripped, my hands can't feel to grip  
My toes too numb to step, wait only for my bootheels to be wanderin'  
I'm ready to go anywhere, I'm ready for to fade  
Into my own parade, cast your dance' spell my way, I promise to go under it
- <sup>G</sup> <sup>A7</sup> <sup>D</sup> <sup>G</sup>  
3. Though you might hear laughin' spinnin' swingin' madly across the sun  
It's not aimed at anyone, it's just escapin' on the run  
Ah but for the sky there are no fences facing  
And if you hear vague traces of skipping reels of rhyme:  
To your tambourine in time, it's just a ragged clown behind  
I wouldn't pay it any mind, it's just a shadow you're seeing that he's chasing
- <sup>G</sup> <sup>A7</sup> <sup>D</sup> <sup>G</sup>  
4. Then take me disappearing through the smoke rings of my mind  
Down the foggy ruins of time, far past the frozen leaves  
The haunted, frightened trees out to the windy beach  
Far from the twisted reach of crazy sorrow  
Yes to dance beneath the diamond sky with one hand waving free  
Silhouetted by the sea, circled by the circus sands  
With all memory and fate driven deep beneath the waves  
Let me forget about today until tomorrow



# Mr Tambourine Man

Byrds

Bob Dylan

INTRO/OUTRO

CHORUS

1            D                            A                            G                            A

5            D                            G                            D                            G

9            A                            G                            A

13            D                            G                            D                            G

17            A                            D                            G                            VERSE

21

A

D

G

D

25

G

D

G

D

29

G

D

G

A

33

A

G

A

D

37

G

D

G

D

41

G

G

A

A

PLAY THROUGH CHORUS + OUTRO

# Amazing Grace

1. A - ma - zing grace, how sweet the sound, that saved a  
 2. 'Twas grace that taught my heart to fear, and grace my  
 3. Thru ma - ny dan - gers toils and snares I have al -  
 4. How sweet the name of Je - sus sounds in a be -  
 5. Must Je - sus bear the cross a - lone and all the

wretch like me I once was lost but now I'm  
 fears re - lieved How pre - cious did that grace ap -  
 rea - dy come 'Tis grace hath brought me safe thus  
 liev - er's ear It soothes his sor - rows, heals his  
 world go free No, there's a cross for ev - 'ry

found was blind but now I see  
 pear the hour I first be - lieved  
 far, and grace will lead me home  
 wounds and drives a - way his fear  
 one and there's a cross for me

Well I've been lookin' real hard And I'm tryin' to find a job But it just keeps gettin' tougher every day

But I got to do my part cause I know in my heart I got to please my sweet baby, yeah

Well, I ain't superstitious And I don't get suspicious But my woman is a friend of mine

And I know that it's true that all the things that I do Will come back to me in my sweet time

So keep on rock'n me baby Keep on a rock'n me baby

Keep on a rock'n me baby Keep on a rock'n me baby

I went from Phoenix, Arizona All the way to Tacoma Philadelphia, Atlanta, L.A.

Northern California where the girls are warm So I could be with my sweet baby, yeah

Keep on a rock'n me baby Keep on a rock'n me baby

Keep on a rock'n me baby Keep on a rock'n me baby Baby, baby, baby

Keep on rock'n Rock'n me baby

Keep on a rock'n Rock'n me baby

Don't get suspicious Now don't be suspicious Babe, you know you are a friend of mine

And you know that it's true That all the things that I do Are gonna come back to you in your sweet time

I went from Phoenix, Arizona All the way to Tacoma Philadelphia, Atlanta, L.A.

Northern California where the girls are warm So I could hear my sweet baby say

Keep on a rock'n me baby Keep on a rock'n me baby

Keep on a rock'n me baby Keep on a rock'n me, rock'n me, rock'n Baby, baby, baby

Keep on a rock'n me baby Keep on a rock'n me baby

Keep on a rock'n me baby



# Pay Me My Money Down

D (E)



1  
 1. I thought I heard the cap - tain say pay me my  
 2. The very next day we cleared the bar, pay me my  
 3. I wish I was Mister How - ard's son pay me my  
 4. I wish I was Mister Steven's son, pay me my

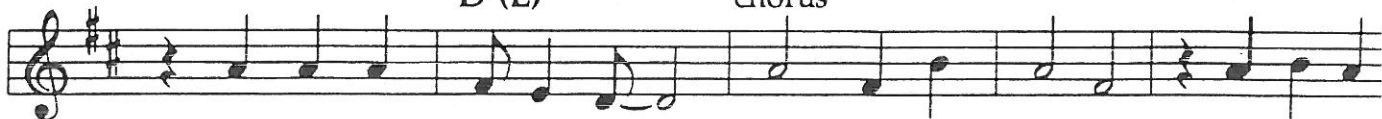
A7 (B7)



5  
 mon-ey down, to - mor - row is my sail - ing day,  
 mon-ey down, he knocked me down with the end of a spar,  
 mon-ey down, sit in the house and drink good rum,  
 mon-ey down, sit on the bank and watch the work done,

D (E)

chorus



8  
 pay me my mon-ey down. Pay me, oh pay me, pay me my  
 pay me my mon-ey down.  
 pay me my mon-ey down.  
 pay me my mon-ey down.

A7 (B7)

D (E)



13  
 mon-ey down. Pay me or go to jail. Pay me my mon-ey down.

# The Last Time

Jagger/Richard

## Verse

E D A E D A

T 2  
A 2  
B 2

7	7	5	5
7	7	7	7
5	5	7	7
5	5	5	5

E<sub>5</sub> D A E D A

7	7	5	5
7	7	7	7
5	5	7	7
5	5	5	5

E<sub>9</sub> D A E D A

7	7	5	5
7	7	7	7
5	5	7	7
5	5	5	5

E<sub>13</sub> D A E D A

7	7	5	5
7	7	7	7
5	5	7	7
5	5	5	5

## Chorus

A<sub>17</sub>

5	7	5	7
5	7	5	7
5	7	5	7
5	7	5	7

D<sub>21</sub> A

5	5	5	5
5	5	5	5
5	5	5	7
5	5	5	7

E<sub>26</sub> D A E D A

7	7	5	5
7	7	7	7
5	5	7	7
5	5	5	5

Camp Town Race  
Stephen Foster

C (G) G7 (D7)



1. Camp - town la - dies sing this song, Doo-dah Doo-dah  
2. Long - tail filly and big black horse  
3. Come down south with your hat caved in

C (G) G7 (D7) C (G)



5 Camp - town race is five miles long, Oh the doo dah day.  
Come to a mud hole they all cut across  
Go back north with a pocket full of tin

Chorus C (G) F (C) C (G)



9 Goin' to run all night, Goin' to run all day.

G7 (D7) C (G)



13 bet my mo-ney on the bob-tail nag. Some - bo-dy bet on the bay

# I Know You Rider

D (A) C (G) G (D) D (A)

1. I know you ri - der gon-na miss me when I'm gone
2. I know my ba - by is bound to love me some
3. Laid down last night just tryin' to get my rest
4. Sun's gon - na shine on my back door some day

C (G) G (D) D (A)

- |           |                     |               |          |         |
|-----------|---------------------|---------------|----------|---------|
| I know    | you ri - der gon-na | miss me when  | I'm gone | Gon-na  |
| I know    | my ba - by is       | bound to love | me some  | She     |
| Laid down | last night just     | tryin' to get | my rest  | But my  |
| Sun's     | gon-na shine on     | my back door  | some day | And the |

F (C) C (G) F (C) C (G) D (A)

- |              |                   |           |               |               |
|--------------|-------------------|-----------|---------------|---------------|
| miss your    | ba - by from      | rol - lin | in your       | arms          |
| throws her   | arms a - round me | like a    | cir - cle     | round the sun |
| mind got to  | ram - blin' like  | the wild  | geese in      | the west      |
| wind's gonna | blow              | blow my   | blues a - way |               |

# I'm Not Your Stepping Stone

RIFF 1 (CHORUS)

Monkees Version

1 E G A C (ETC.)

Measures 1-4 of Riff 1 (Chorus). The bass staff shows a melodic line starting on G2. The guitar tablature for strings T, A, and B shows fret numbers: 0 0 3 3 | 5 5 3 3 5 | 0 0 3 3 | 5 5 3 3 5.

Measures 5-8 of Riff 1 (Chorus). The bass staff continues the melodic line. The guitar tablature for strings T, A, and B shows fret numbers: 0 0 3 3 | 5 5 3 3 5 | 0 0 3 3 | 5 5 3 3 5.

Measures 9-12 of Riff 1 (Chorus). The bass staff continues the melodic line. The guitar tablature for strings T, A, and B shows fret numbers: 0 0 3 3 | 5 5 3 3 5 | 0 0 3 3 | 5 5 3 3 5.

13 RIFF 2 (VERSE)

Measures 13-15 of Riff 2 (Verse). The bass staff shows a melodic line starting on G2. The guitar tablature for strings T, A, and B shows fret numbers: 0 0 3 3 | 5 5 3 3 | 0 0 3 3.

Measures 16-18 of Riff 2 (Verse). The bass staff continues the melodic line. The guitar tablature for strings T, A, and B shows fret numbers: 5 5 3 3 | 0 0 3 3 | 5 5 3 3.

19

23

27

RIFF 3

31

RIFF 4

33

ORGAN BREAK, BACK TO CHORUS

# DOWN IN THE VALLEY

A (D) E (A)

1

1. Down in the val - ley	the	val - ley	so	low
2. Hear the wind blow	love	hear the wind	blow	
3. If you don't love me		love whom you	please	
4. Give my heart ease	love	give my heart	ease	

7

Hang your head	o - ver
Hang your head	o - ver
Throw your arms 'round	me
Throw your arms 'round	me

A (D)

13

hear	the	wind	blow
hear	the	wind	blow
give	my	heart	ease
give	my	heart	ease

Write me a letter, send it by mail  
Send it in care of the Birmingham Jail

Birmingham jail love, Birmingham jail,  
Send it in care of Birmingham jail

Build me a castle forty feet high  
So I can see her as she rides by

As she rides by love, as she rides by  
So I can see her, as she rides by

Rose love sunshine, violets love dew  
Angels in heaven, know I love you

Know I love you dear, know I love you  
Angels in heaven know I love you

